

## **Výpočet umělého osvětlení dle ČSN EN 12464-1:2011**

# **TREVOS**

Stavba : ST. ÚPRAVY BÝV. ZŠ NA VÝROB. OBJ. SORTING SOLUTIONS s.r.o.  
Projekt : ELEKTROINSTALACE-OSVĚTLENÍ  
Soubor : hala 102.wls  
Výkres : ELEKTROINSTALACE OSVĚTLENÍ 501.dwg  
Datum : 1.12.2015

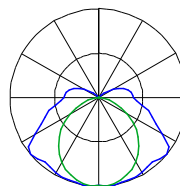
## Obsah

Použitá svítidla  
102 VÝROBNÍ HALA

2  
3

## Použitá svítidla

TREVOS a.s.  
Typ: PRIMA 254 ABS AC ET5  
Označení: -  
Název: 2x54W, T5, EVG, průmyslové, základna ABS, difuzor AC  
Krytí: IP66  
Zdroj: FQ 54 W/840 G5, LUMILUX T5 HQ Cool White 16 mm  
54W, 5000lm, 24000hod, Ra 80  
Počet svítidel: 27



## 102 VÝROBNÍ HALA

<b>Prostor</b>	<b>102 VÝROBNÍ HALA</b>	-
<b>Norma</b>	5.18.9	-
Délka	14500	mm
Šířka	26750	mm
Výška	5100	mm
Činitel odrazu stropu	0.40	-
Činitel odrazu stěn 1,2,3,4	0.35 0.35 0.35 0.35	-
Činitel odrazu podlahy	0.20	-

<b>Udržovací činitel</b>	<b>Počítán</b>	-
Čistota prostředí	Čisté	-
Interval čištění svítidel	12	Měsíců
Interval obnovy povrchů	36	Měsíců
Interval výměny zdrojů	Individuální	-

### Rozmístění výpočetních bodů

<b>Místo zrakového úkolu</b>	<b>Místo zrakového úkolu 1</b>	-
Souřadnice prvního bodu	250 375 750	mm
Rozteč bodů 1	500 0 0	mm
Rozteč bodů 2	0 500 0	mm
Počet ve směru rozteče 1,2	29 53	-

<b>Místo zrakového úkolu</b>	<b>Místo zrakového úkolu 1a</b>	-
Souřadnice prvního bodu	250 375 1650	mm
Rozteč bodů 1	500 0 0	mm
Rozteč bodů 2	0 500 0	mm
Počet ve směru rozteče 1,2	29 53	-

### Rozmístění svítidel

<b>Soustava svítidel 1</b>	<b>Soustava svítidel 1</b>	-
Svítidlo	PRIMA 254 ABS AC ET5	-
Světelný zdroj	FQ 54 W/840 G5	-
Souřadnice prvního svítidla	3007 1487 5100	mm
Rozteč svítidel 1	4243 0 0	mm
Rozteč svítidel 2	0 2972 0	mm
Počet ve směru rozteče 1,2	3 9	-
Počet svítidel	27	-
Vektor optické osy	0.00 0.00 -1.00	-
Vektor osy C0	1.00 0.00 0.00	-
Úhel otočení	0	°
Úhel naklonění	0	°
Úhel natočení	0	°

### Horizontální udržovaná osvětlenost v kontrolních bodech - Místo zrakového úkolu 1

Udržovací činitel **0.73**  
Minimální hodnota **139.7 lx**  
Střední hodnota **311.0 lx**  
Maximální hodnota **399.3 lx**  
Rovnoměrnost **0.45**

Y\X	250	750	1250	1750	2250	2750	3250	3750	4250	4750
375	<b>139.7</b>	154.2	169.4	182.9	196.2	206.0	213.7	219.5	224.3	229.5
875	152.6	169.4	186.3	201.7	216.8	227.4	235.9	242.7	247.7	253.5
1375	164.9	183.0	201.4	218.4	234.5	246.6	255.8	262.6	268.2	274.4

Y\X	250	750	1250	1750	2250	2750	3250	3750	4250	4750
1875	174.8	194.5	214.1	232.2	249.3	262.4	272.3	279.5	285.0	291.7
2375	183.5	203.9	224.5	243.1	260.9	274.6	284.8	292.5	298.5	305.5
2875	190.9	212.3	233.6	252.8	271.2	285.3	295.8	303.9	310.2	317.6
3375	197.8	219.7	241.4	261.0	279.7	294.2	305.1	313.4	320.2	327.9
3875	203.4	225.9	247.9	268.2	287.3	301.8	313.1	321.7	328.7	336.7
4375	208.6	231.1	253.4	274.3	293.4	308.6	320.0	328.3	335.7	343.8
4875	212.3	235.2	257.7	278.8	298.4	313.6	325.1	333.5	340.7	349.1
5375	215.1	238.1	261.0	281.6	301.2	316.5	328.0	336.6	344.1	352.6
5875	217.6	240.7	263.9	284.4	304.4	319.6	331.2	340.1	347.2	355.9
6375	220.1	243.5	266.5	287.1	307.0	322.3	334.0	342.9	350.2	359.0
6875	222.4	245.8	268.6	289.9	309.9	325.1	336.9	345.7	353.2	361.9
7375	224.3	247.6	270.5	292.2	312.0	327.7	339.4	347.9	355.7	364.2
7875	225.6	249.0	271.9	293.5	313.4	329.1	340.8	349.4	357.0	365.7
8375	226.4	249.8	272.9	293.8	313.7	329.2	341.0	349.8	357.6	366.3
8875	227.1	250.4	273.7	294.6	314.9	330.3	341.9	351.1	358.3	367.0
9375	228.1	251.5	274.7	295.6	315.7	331.1	342.9	352.0	359.4	368.2
9875	229.3	252.6	275.6	297.1	317.2	332.6	344.4	353.2	360.8	369.6
10375	230.0	253.3	276.4	298.1	317.9	333.7	345.6	354.0	361.9	370.4
10875	230.2	253.7	276.6	298.3	318.4	334.0	345.7	354.4	362.1	370.7
11375	230.2	253.7	276.9	297.9	317.8	333.3	345.1	353.9	361.6	370.5
11875	230.3	253.6	276.9	297.9	318.1	333.6	345.2	354.3	361.7	370.3
12375	230.6	254.1	277.3	298.2	318.3	333.7	345.5	354.5	361.9	370.8
12875	231.1	254.6	277.6	299.2	319.2	334.8	346.6	355.2	362.9	371.6
13375	231.4	254.8	277.8	299.6	319.4	335.3	346.9	355.4	363.4	371.9
13875	231.1	254.6	277.6	299.2	319.2	334.8	346.6	355.2	362.9	371.6
14375	230.6	254.1	277.3	298.2	318.3	333.7	345.5	354.5	361.9	370.8
14875	230.3	253.6	276.9	297.9	318.1	333.6	345.2	354.3	361.7	370.3
15375	230.2	253.7	276.9	297.9	317.8	333.3	345.1	353.9	361.6	370.5
15875	230.2	253.7	276.6	298.3	318.4	334.0	345.7	354.4	362.1	370.7
16375	230.0	253.3	276.4	298.1	317.9	333.7	345.6	354.0	361.9	370.4
16875	229.3	252.6	275.6	297.1	317.2	332.6	344.4	353.2	360.8	369.6
17375	228.1	251.5	274.7	295.6	315.7	331.1	342.9	352.0	359.4	368.2
17875	227.1	250.4	273.7	294.6	314.9	330.3	341.9	351.1	358.3	367.0
18375	226.4	249.8	272.9	293.8	313.7	329.2	341.0	349.8	357.6	366.3
18875	225.6	249.0	271.9	293.5	313.4	329.1	340.8	349.4	357.0	365.7
19375	224.3	247.6	270.5	292.2	312.0	327.7	339.4	347.9	355.7	364.2
19875	222.4	245.8	268.6	289.9	309.9	325.1	336.9	345.7	353.2	361.9
20375	220.1	243.5	266.5	287.1	307.0	322.3	334.0	342.9	350.2	359.0
20875	217.6	240.7	263.9	284.4	304.4	319.7	331.2	340.1	347.2	355.9
21375	215.1	238.1	261.0	281.6	301.2	316.5	328.0	336.6	344.1	352.6
21875	212.3	235.2	257.7	278.8	298.4	313.6	325.1	333.5	340.7	349.1
22375	208.6	231.1	253.4	274.3	293.5	308.6	320.0	328.3	335.7	343.8
22875	203.4	225.9	247.9	268.2	287.3	301.8	313.1	321.7	328.7	336.7
23375	197.8	219.7	241.4	261.0	279.7	294.2	305.1	313.4	320.2	327.9
23875	190.9	212.3	233.6	252.8	271.2	285.3	295.8	303.9	310.2	317.6
24375	183.5	203.9	224.5	243.1	260.9	274.6	284.9	292.5	298.5	305.5
24875	174.8	194.5	214.1	232.2	249.3	262.4	272.3	279.5	285.0	291.7
25375	164.9	183.0	201.4	218.4	234.5	246.6	255.8	262.6	268.2	274.4
25875	152.6	169.4	186.3	201.7	216.8	227.4	235.9	242.7	247.7	253.5
26375	139.7	154.3	169.4	182.9	196.2	206.0	213.7	219.5	224.3	229.5

Y\X	5250	5750	6250	6750	7250	7750	8250	8750	9250	9750
375	234.4	238.7	241.9	245.0	246.6	245.0	241.9	238.7	234.4	229.5
875	258.7	263.4	267.0	270.5	272.2	270.5	267.0	263.4	258.7	253.5
1375	280.2	285.4	289.3	292.8	295.0	292.8	289.3	285.4	280.2	274.4
1875	298.1	303.1	307.9	311.2	313.8	311.2	307.9	303.1	298.1	291.7
2375	312.0	317.7	322.2	326.0	329.0	326.0	322.2	317.7	312.0	305.5
2875	324.3	330.2	334.7	339.1	341.6	339.1	334.7	330.2	324.3	317.6
3375	335.2	341.0	345.0	349.6	352.2	349.6	345.0	341.0	335.2	327.9
3875	344.0	350.0	354.8	359.1	361.5	359.1	354.8	350.0	344.0	336.7
4375	351.3	357.7	362.8	366.6	369.1	366.6	362.8	357.7	351.3	343.8
4875	356.8	363.0	368.5	372.3	375.0	372.3	368.5	363.0	356.8	349.1
5375	360.4	366.9	371.7	376.1	379.2	376.1	371.7	366.9	360.4	352.6
5875	363.6	370.2	374.9	380.0	382.4	380.0	374.9	370.2	363.6	355.9
6375	367.1	373.5	378.1	383.1	385.5	383.1	378.1	373.5	367.1	359.0
6875	370.0	376.5	382.0	386.4	388.8	386.4	382.0	376.5	370.0	361.9
7375	372.3	379.0	384.5	388.6	391.2	388.6	384.5	379.0	372.3	364.2
7875	373.8	380.4	386.1	390.1	392.8	390.1	386.1	380.4	373.8	365.7
8375	374.3	381.1	386.2	390.8	393.8	390.8	386.2	381.1	374.3	366.3
8875	374.9	381.9	386.8	392.1	394.3	392.1	386.7	381.9	374.9	367.0
9375	376.3	383.1	388.0	392.9	395.4	392.9	388.0	383.1	376.3	368.2
9875	377.7	384.5	390.2	394.7	397.0	394.7	390.2	384.5	377.7	369.6
10375	378.5	385.4	391.2	395.2	397.9	395.2	391.2	385.4	378.5	370.4
10875	378.8	385.6	391.4	395.6	398.2	395.6	391.4	385.6	378.8	370.7

Y\X	5250	5750	6250	6750	7250	7750	8250	8750	9250	9750
11375	378.5	385.3	390.5	395.2	398.0	395.2	390.5	385.3	378.5	370.5
11875	378.3	385.3	390.2	395.6	397.7	395.6	390.2	385.3	378.3	370.3
12375	378.9	385.7	390.7	395.7	398.3	395.7	390.7	385.7	378.9	370.8
12875	379.8	386.5	392.3	396.7	399.1	396.7	392.3	386.5	379.8	371.6
13375	379.9	386.8	392.5	396.7	<b>399.3</b>	396.7	392.5	386.8	379.9	371.9
13875	379.8	386.5	392.3	396.7	399.1	396.7	392.3	386.5	379.8	371.6
14375	378.9	385.7	390.7	395.7	398.3	395.7	390.7	385.7	378.9	370.8
14875	378.3	385.3	390.2	395.6	397.7	395.6	390.2	385.3	378.3	370.3
15375	378.5	385.3	390.5	395.2	398.0	395.2	390.5	385.3	378.5	370.5
15875	378.9	385.6	391.4	395.6	398.2	395.6	391.4	385.6	378.8	370.7
16375	378.5	385.4	391.2	395.2	397.9	395.2	391.2	385.4	378.5	370.4
16875	377.7	384.5	390.2	394.7	397.0	394.7	390.2	384.5	377.7	369.6
17375	376.3	383.1	388.0	392.9	395.4	392.9	388.0	383.1	376.3	368.2
17875	374.9	381.9	386.8	392.1	394.3	392.1	386.7	381.9	374.9	367.0
18375	374.3	381.1	386.2	390.8	393.8	390.8	386.2	381.1	374.3	366.3
18875	373.8	380.4	386.1	390.1	392.8	390.1	386.1	380.4	373.8	365.7
19375	372.3	379.0	384.6	388.6	391.2	388.6	384.5	379.0	372.3	364.2
19875	370.0	376.5	382.0	386.4	388.8	386.4	382.0	376.5	370.0	361.9
20375	367.1	373.5	378.1	383.1	385.5	383.1	378.1	373.5	367.1	359.0
20875	363.6	370.2	374.9	380.0	382.4	380.0	374.9	370.2	363.6	355.9
21375	360.4	366.9	371.7	376.1	379.2	376.1	371.7	366.9	360.4	352.6
21875	356.8	363.0	368.5	372.3	375.0	372.3	368.5	363.0	356.8	349.1
22375	351.3	357.7	362.8	366.6	369.1	366.6	362.8	357.7	351.3	343.8
22875	344.0	350.1	354.8	359.1	361.5	359.1	354.8	350.0	344.0	336.7
23375	335.2	341.0	345.0	349.6	352.3	349.6	345.0	341.0	335.2	327.9
23875	324.3	330.2	334.7	339.1	341.6	339.1	334.7	330.2	324.3	317.6
24375	312.0	317.7	322.2	326.0	329.0	326.0	322.2	317.7	312.0	305.5
24875	298.1	303.2	307.9	311.2	313.8	311.2	307.9	303.2	298.1	291.7
25375	280.2	285.4	289.3	292.8	295.0	292.8	289.3	285.4	280.2	274.4
25875	258.7	263.4	267.0	270.5	272.2	270.5	267.0	263.4	258.7	253.5
26375	234.4	238.7	241.9	245.0	246.6	245.0	241.9	238.7	234.4	229.5

Y\X	10250	10750	11250	11750	12250	12750	13250	13750	14250
375	224.3	219.5	213.7	206.0	196.2	182.9	169.4	154.2	<b>139.7</b>
875	247.7	242.7	235.9	227.4	216.8	201.7	186.3	169.4	152.6
1375	268.2	262.6	255.8	246.6	234.5	218.4	201.4	183.0	164.9
1875	285.0	279.5	272.3	262.4	249.3	232.2	214.1	194.5	174.8
2375	298.5	292.5	284.8	274.6	260.9	243.1	224.5	203.9	183.5
2875	310.2	303.9	295.8	285.3	271.2	252.8	233.6	212.3	190.9
3375	320.2	313.4	305.1	294.2	279.7	261.0	241.4	219.7	197.8
3875	328.7	321.7	313.1	301.8	287.3	268.2	247.9	225.9	203.4
4375	335.7	328.3	320.0	308.6	293.4	274.3	253.4	231.0	208.6
4875	340.7	333.5	325.1	313.6	298.4	278.8	257.7	235.2	212.3
5375	344.1	336.6	328.0	316.5	301.2	281.6	261.0	238.1	215.1
5875	347.1	340.1	331.2	319.6	304.4	284.4	263.9	240.7	217.5
6375	350.2	342.9	334.0	322.3	307.0	287.1	266.5	243.5	220.1
6875	353.2	345.7	336.9	325.1	309.8	289.9	268.6	245.8	222.4
7375	355.7	347.9	339.4	327.7	312.0	292.2	270.5	247.6	224.3
7875	357.0	349.4	340.8	329.1	313.4	293.5	271.9	249.0	225.6
8375	357.6	349.8	341.0	329.2	313.7	293.8	272.9	249.7	226.4
8875	358.2	351.1	341.9	330.3	314.9	294.5	273.7	250.4	227.1
9375	359.4	352.0	342.9	331.1	315.7	295.6	274.7	251.5	228.1
9875	360.8	353.2	344.4	332.6	317.2	297.1	275.6	252.6	229.2
10375	361.9	354.0	345.6	333.7	317.9	298.1	276.4	253.3	230.0
10875	362.1	354.4	345.7	334.0	318.3	298.3	276.6	253.7	230.2
11375	361.6	353.9	345.1	333.3	317.8	297.9	276.9	253.7	230.2
11875	361.7	354.3	345.2	333.6	318.1	297.9	276.9	253.6	230.3
12375	361.9	354.5	345.5	333.7	318.3	298.2	277.3	254.1	230.6
12875	362.9	355.2	346.6	334.8	319.2	299.2	277.6	254.6	231.1
13375	363.4	355.4	346.9	335.3	319.4	299.6	277.8	254.7	231.4
13875	362.9	355.2	346.6	334.8	319.2	299.2	277.6	254.6	231.1
14375	361.9	354.5	345.5	333.7	318.3	298.2	277.3	254.1	230.6
14875	361.7	354.3	345.2	333.6	318.1	297.9	276.9	253.6	230.3
15375	361.6	353.9	345.1	333.3	317.8	297.9	276.9	253.7	230.2
15875	362.1	354.4	345.7	334.0	318.3	298.3	276.6	253.7	230.2
16375	361.9	354.0	345.6	333.7	317.9	298.1	276.4	253.3	230.0
16875	360.8	353.2	344.4	332.6	317.2	297.1	275.6	252.6	229.2
17375	359.4	352.0	342.9	331.1	315.7	295.6	274.7	251.5	228.1
17875	358.2	351.1	341.9	330.3	314.9	294.5	273.7	250.4	227.1
18375	357.6	349.8	341.0	329.2	313.7	293.8	272.9	249.7	226.4
18875	357.0	349.4	340.8	329.1	313.4	293.5	271.9	249.0	225.6
19375	355.7	347.9	339.4	327.7	312.0	292.2	270.5	247.6	224.3
19875	353.2	345.7	336.9	325.1	309.8	289.9	268.6	245.8	222.4
20375	350.2	342.9	334.0	322.3	307.0	287.1	266.5	243.5	220.1

Y\X	10250	10750	11250	11750	12250	12750	13250	13750	14250
20875	347.2	340.1	331.2	319.6	304.4	284.4	263.9	240.7	217.5
21375	344.1	336.6	328.0	316.5	301.2	281.6	261.0	238.1	215.1
21875	340.7	333.5	325.1	313.6	298.4	278.8	257.7	235.2	212.3
22375	335.7	328.3	320.0	308.6	293.4	274.3	253.4	231.0	208.5
22875	328.7	321.7	313.1	301.8	287.3	268.2	247.9	225.9	203.4
23375	320.2	313.4	305.1	294.2	279.7	261.0	241.4	219.7	197.8
23875	310.2	303.9	295.8	285.3	271.2	252.8	233.6	212.3	190.9
24375	298.5	292.5	284.8	274.6	260.9	243.1	224.5	203.9	183.5
24875	285.0	279.5	272.3	262.4	249.3	232.2	214.1	194.5	174.8
25375	268.2	262.6	255.8	246.6	234.5	218.4	201.4	183.0	164.9
25875	247.7	242.7	235.9	227.4	216.8	201.7	186.3	169.4	152.6
26375	224.3	219.5	213.7	206.0	196.2	182.9	169.4	154.2	139.7

### Horizontální udržovaná osvětlenost v kontrolních bodech - Místo zrakového úkolu 1a

Udržovací činitel **0.73**  
Minimální hodnota **140.0 lx**  
Střední hodnota **338.6 lx**  
Maximální hodnota **449.1 lx**  
Rovnoměrnost **0.41**

Y\X	250	750	1250	1750	2250	2750	3250	3750	4250	4750
375	<b>140.1</b>	157.0	177.3	197.8	218.1	234.6	244.7	247.7	247.6	248.4
875	154.7	175.0	198.3	223.3	246.3	264.9	276.4	279.7	279.3	279.1
1375	168.3	190.4	216.1	243.9	269.1	290.4	302.9	305.2	304.8	304.5
1875	178.5	202.5	229.5	258.4	285.5	307.7	320.9	323.9	322.9	323.3
2375	187.0	211.4	239.4	268.4	296.6	319.8	333.1	336.4	335.7	336.6
2875	194.0	218.7	247.8	276.9	305.4	329.2	342.8	346.7	346.2	347.7
3375	200.5	225.9	255.0	284.8	314.0	338.5	352.6	356.5	356.2	357.9
3875	205.9	232.1	261.7	292.9	322.4	347.5	362.2	365.8	365.9	367.3
4375	210.4	237.0	266.9	299.2	328.7	354.1	369.6	372.6	373.0	374.2
4875	213.4	240.0	269.9	301.9	332.0	357.7	372.9	376.5	376.3	377.8
5375	215.5	241.6	271.6	302.5	332.6	358.2	373.1	377.1	377.2	379.0
5875	217.5	243.2	273.5	303.7	333.9	359.4	374.2	378.6	378.6	380.9
6375	219.6	245.7	275.5	306.3	336.6	362.3	377.3	381.6	381.4	383.7
6875	221.8	248.2	278.2	310.1	340.7	366.6	382.0	385.8	385.8	387.7
7375	223.4	250.2	280.3	313.1	343.0	368.9	384.5	388.2	388.9	390.2
7875	224.3	250.8	280.8	313.1	343.5	369.6	385.1	388.9	389.0	390.5
8375	224.5	250.5	280.4	311.6	341.9	367.7	382.9	387.1	387.2	389.1
8875	224.9	250.7	281.0	311.4	341.5	367.3	382.3	386.7	387.0	389.3
9375	225.8	251.8	281.8	312.7	342.9	368.8	384.0	388.2	388.3	390.5
9875	227.0	253.4	283.4	315.5	345.9	372.1	387.7	391.2	391.5	393.1
10375	227.6	254.3	284.5	317.4	347.4	372.6	388.6	392.7	393.3	394.5
10875	227.8	254.2	284.3	316.6	346.9	373.0	388.6	392.3	392.4	394.1
11375	227.4	253.3	283.4	314.4	344.7	370.6	385.7	390.0	389.9	392.1
11875	227.3	253.1	283.2	313.7	343.7	369.7	384.7	388.9	389.3	391.6
12375	227.7	253.7	283.7	314.7	344.9	370.8	386.0	390.2	390.2	392.5
12875	228.5	254.9	285.0	317.0	347.5	373.5	389.1	392.7	392.9	394.7
13375	228.7	255.3	285.6	318.4	348.5	373.5	389.3	393.8	394.4	395.6
13875	228.5	254.9	285.0	317.0	347.5	373.5	389.1	392.7	392.9	394.7
14375	227.7	253.7	283.7	314.7	344.9	370.8	386.0	390.2	390.2	392.5
14875	227.3	253.1	283.2	313.7	343.7	369.7	384.7	388.9	389.3	391.6
15375	227.4	253.3	283.4	314.4	344.7	370.6	385.7	390.0	389.9	392.1
15875	227.8	254.2	284.3	316.6	346.9	373.0	388.6	392.3	392.4	394.1
16375	227.6	254.3	284.5	317.4	347.4	372.6	388.6	392.7	393.3	394.5
16875	227.0	253.4	283.4	315.5	345.9	372.1	387.7	391.2	391.5	393.1
17375	225.8	251.8	281.8	312.7	342.9	368.8	384.0	388.2	388.3	390.5
17875	224.9	250.7	281.0	311.4	341.5	367.3	382.3	386.7	387.0	389.3
18375	224.5	250.5	280.4	311.6	341.9	367.7	382.9	387.1	387.2	389.1
18875	224.3	250.8	280.8	313.1	343.5	369.6	385.1	388.9	389.0	390.5
19375	223.4	250.2	280.3	313.1	343.0	368.9	384.5	388.2	388.9	390.2
19875	221.8	248.2	278.2	310.1	340.7	366.6	382.0	385.8	385.8	387.7
20375	219.6	245.7	275.5	306.3	336.6	362.3	377.3	381.6	381.4	383.7
20875	217.5	243.2	273.5	303.7	333.9	359.4	374.2	378.6	378.6	380.9
21375	215.5	241.6	271.6	302.5	332.6	358.2	373.1	377.1	377.2	379.0
21875	213.4	240.0	269.9	301.9	332.0	357.7	372.9	376.5	376.3	377.8
22375	210.4	237.0	266.9	299.2	328.7	354.1	369.6	372.6	373.0	374.2
22875	205.9	232.1	261.7	292.9	322.4	347.5	362.2	365.8	365.9	367.3
23375	200.5	225.9	255.0	284.8	314.0	338.5	352.6	356.5	356.2	357.9
23875	194.0	218.7	247.8	276.9	305.4	329.2	342.8	346.7	346.2	347.7
24375	187.0	211.4	239.4	268.4	296.6	319.8	333.1	336.4	335.7	336.6

Y\X	250	750	1250	1750	2250	2750	3250	3750	4250	4750
24875	178.5	202.5	229.5	258.4	285.5	307.7	320.9	323.9	322.9	323.3
25375	168.3	190.4	216.1	243.9	269.1	290.4	302.9	305.2	304.8	304.5
25875	154.7	175.1	198.3	223.3	246.3	264.9	276.4	279.7	279.3	279.1
26375	<b>140.1</b>	157.0	177.3	197.9	218.2	234.6	244.8	247.7	247.6	248.4

Y\X	5250	5750	6250	6750	7250	7750	8250	8750	9250	9750
375	251.8	258.4	267.4	277.3	281.8	277.3	267.4	258.4	251.8	248.4
875	282.6	290.4	300.9	312.6	317.2	312.6	300.9	290.4	282.6	279.1
1375	308.5	317.1	328.5	341.0	346.9	341.0	328.5	317.1	308.5	304.5
1875	327.8	336.4	348.9	362.1	368.6	362.1	348.9	336.4	327.8	323.3
2375	341.3	350.2	363.0	376.5	383.8	376.5	363.0	350.2	341.3	336.6
2875	352.4	362.0	374.6	388.2	395.4	388.2	374.6	362.0	352.4	347.7
3375	363.2	372.5	385.1	399.7	407.1	399.7	385.1	372.5	363.2	357.9
3875	372.4	382.4	395.4	410.6	417.4	410.6	395.4	382.4	372.4	367.3
4375	380.0	389.8	403.4	418.5	425.8	418.5	403.4	389.8	380.0	374.2
4875	383.7	393.4	407.2	422.4	429.5	422.4	407.2	393.4	383.7	377.8
5375	384.8	394.8	408.5	423.7	431.4	423.7	408.5	394.8	384.8	379.0
5875	386.4	396.6	410.2	425.1	432.8	425.1	410.2	396.6	386.4	380.9
6375	389.6	399.4	413.0	428.6	436.2	428.6	413.0	399.4	389.6	383.7
6875	393.5	403.8	417.5	433.1	440.0	433.1	417.5	403.8	393.5	387.7
7375	396.3	406.5	420.6	436.3	443.6	436.3	420.6	406.5	396.3	390.2
7875	396.7	406.8	420.9	436.4	443.5	436.4	420.9	406.8	396.7	390.5
8375	395.2	405.5	419.4	434.8	442.5	434.8	419.4	405.5	395.2	389.1
8875	395.0	405.1	419.0	434.2	441.9	434.2	419.0	405.1	395.0	389.3
9375	396.3	406.5	420.5	436.0	443.6	436.0	420.5	406.5	396.3	390.5
9875	399.2	409.6	423.5	439.1	446.0	439.1	423.5	409.6	399.2	393.1
10375	400.8	410.9	425.2	441.2	448.1	441.2	425.2	410.9	400.8	394.5
10875	400.1	410.5	424.7	440.1	447.1	440.1	424.7	410.5	400.1	394.1
11375	397.9	408.4	422.2	437.9	445.4	437.9	422.2	408.4	397.9	392.1
11875	397.3	407.6	421.2	436.7	444.4	436.7	421.2	407.6	397.3	391.6
12375	398.2	408.6	422.4	438.1	445.6	438.1	422.4	408.6	398.2	392.5
12875	400.7	411.1	425.3	440.7	447.7	440.7	425.3	411.1	400.7	394.7
13375	401.8	411.9	426.4	442.2	<b>449.1</b>	442.2	426.4	411.9	401.8	395.6
13875	400.7	411.1	425.3	440.7	447.7	440.7	425.3	411.1	400.7	394.7
14375	398.2	408.6	422.4	438.1	445.6	438.1	422.4	408.6	398.2	392.5
14875	397.3	407.6	421.2	436.7	444.4	436.7	421.2	407.6	397.3	391.6
15375	397.9	408.4	422.2	437.9	445.4	437.9	422.2	408.4	397.9	392.1
15875	400.1	410.5	424.7	440.1	447.1	440.1	424.7	410.5	400.1	394.1
16375	400.8	410.9	425.2	441.2	448.1	441.2	425.2	410.9	400.8	394.5
16875	399.2	409.6	423.5	439.1	446.0	439.1	423.5	409.6	399.2	393.1
17375	396.3	406.5	420.5	436.0	443.6	436.0	420.5	406.5	396.3	390.5
17875	395.0	405.1	419.0	434.2	441.9	434.2	419.0	405.1	395.0	389.3
18375	395.2	405.5	419.4	434.8	442.5	434.8	419.4	405.5	395.2	389.1
18875	396.7	406.8	420.9	436.4	443.5	436.4	420.9	406.8	396.7	390.5
19375	396.3	406.5	420.6	436.3	443.6	436.3	420.6	406.5	396.3	390.2
19875	393.5	403.8	417.5	433.1	440.0	433.1	417.5	403.8	393.5	387.7
20375	389.6	399.4	413.0	428.6	436.2	428.6	413.0	399.4	389.6	383.7
20875	386.4	396.6	410.2	425.1	432.8	425.1	410.2	396.6	386.4	380.9
21375	384.8	394.8	408.5	423.7	431.4	423.7	408.5	394.8	384.8	379.0
21875	383.7	393.4	407.2	422.4	429.5	422.4	407.2	393.4	383.7	377.8
22375	380.0	389.8	403.4	418.5	425.8	418.5	403.4	389.8	380.0	374.2
22875	372.4	382.4	395.4	410.6	417.4	410.6	395.4	382.4	372.4	367.3
23375	363.2	372.5	385.1	399.7	407.1	399.7	385.1	372.5	363.2	357.9
23875	352.4	362.0	374.6	388.2	395.4	388.2	374.6	362.0	352.4	347.7
24375	341.3	350.2	363.0	376.5	383.8	376.5	363.0	350.2	341.3	336.6
24875	327.8	336.4	348.9	362.1	368.6	362.1	348.9	336.4	327.8	323.3
25375	308.5	317.1	328.5	341.0	346.9	341.0	328.5	317.1	308.5	304.5
25875	282.6	290.4	301.0	312.6	317.2	312.6	301.0	290.4	282.6	279.1
26375	251.8	258.5	267.4	277.3	281.8	277.3	267.4	258.5	251.8	248.4

Y\X	10250	10750	11250	11750	12250	12750	13250	13750	14250
375	247.6	247.7	244.7	234.6	218.1	197.8	177.3	157.0	<b>140.0</b>
875	279.3	279.7	276.4	264.9	246.3	223.3	198.3	175.0	154.7
1375	304.8	305.2	302.9	290.4	269.1	243.9	216.1	190.4	168.3
1875	322.9	323.9	320.9	307.7	285.5	258.4	229.5	202.5	178.5
2375	335.7	336.4	333.1	319.8	296.6	268.4	239.4	211.4	187.0
2875	346.2	346.7	342.8	329.2	305.4	276.9	247.8	218.7	194.0
3375	356.2	356.5	352.6	338.5	313.9	284.8	255.0	225.9	200.5
3875	365.9	365.8	362.2	347.5	322.4	292.9	261.7	232.1	205.9
4375	373.0	372.6	369.6	354.1	328.7	299.2	266.9	237.0	210.4
4875	376.3	376.5	372.9	357.7	332.0	301.9	269.9	240.0	213.4
5375	377.2	377.1	373.1	358.2	332.6	302.5	271.6	241.6	215.5
5875	378.6	378.6	374.2	359.4	333.9	303.7	273.5	243.2	217.4
6375	381.4	381.6	377.3	362.3	336.6	306.3	275.5	245.7	219.6

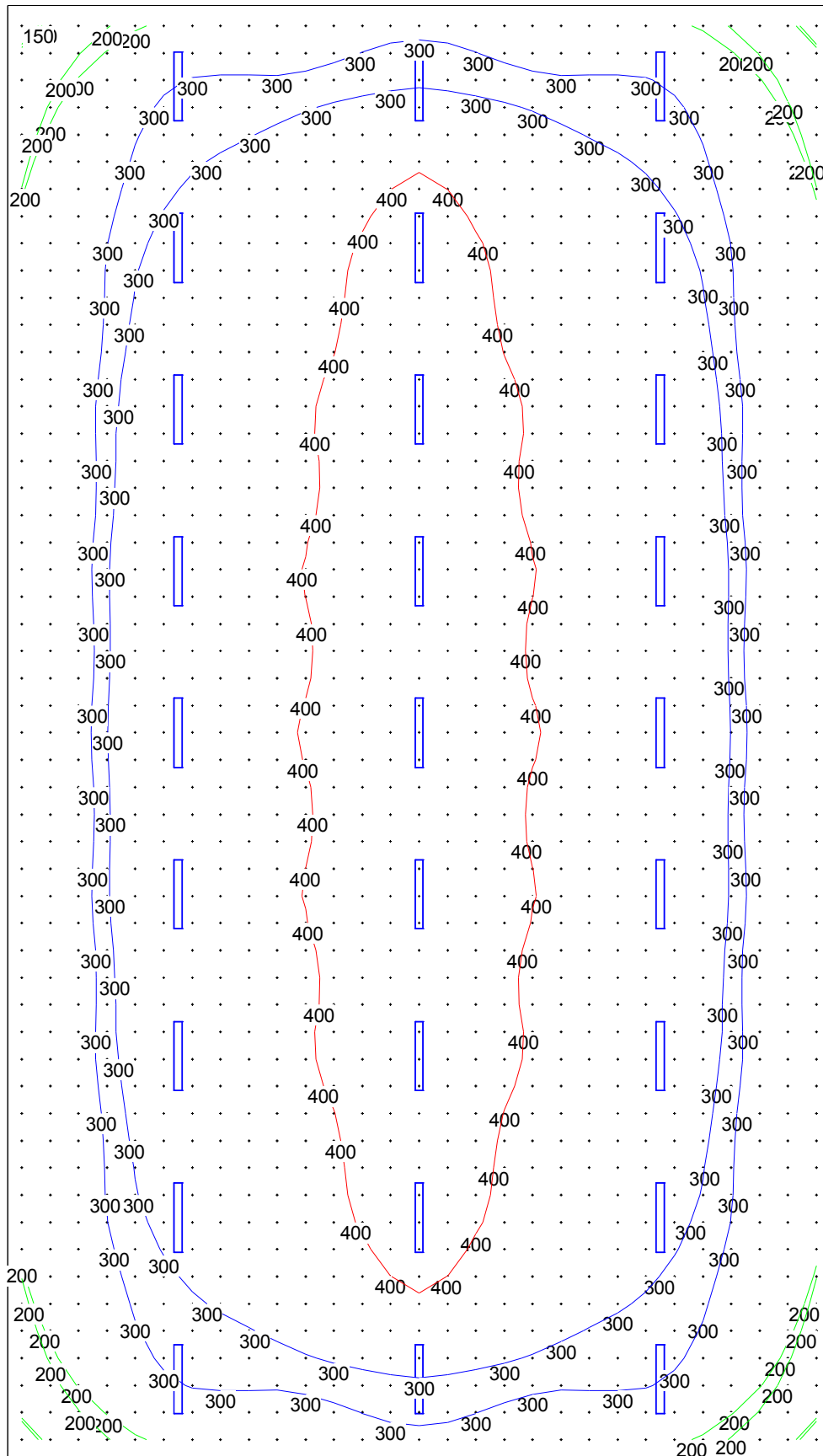
Y\X	10250	10750	11250	11750	12250	12750	13250	13750	14250
6875	385.8	385.8	382.0	366.6	340.7	310.1	278.2	248.2	221.8
7375	388.9	388.2	384.4	368.9	343.0	313.1	280.3	250.2	223.4
7875	389.0	388.9	385.1	369.5	343.5	313.1	280.8	250.8	224.3
8375	387.2	387.1	382.9	367.7	341.9	311.6	280.4	250.4	224.5
8875	387.0	386.7	382.3	367.3	341.5	311.4	281.0	250.7	224.9
9375	388.3	388.2	384.0	368.8	342.9	312.7	281.8	251.8	225.8
9875	391.5	391.2	387.7	372.1	345.9	315.5	283.4	253.4	227.0
10375	393.3	392.7	388.5	372.6	347.4	317.4	284.5	254.3	227.6
10875	392.4	392.3	388.6	373.0	346.9	316.6	284.3	254.2	227.8
11375	389.9	390.0	385.7	370.6	344.7	314.4	283.4	253.3	227.4
11875	389.2	388.9	384.7	369.7	343.7	313.7	283.2	253.1	227.3
12375	390.2	390.2	386.0	370.8	344.9	314.7	283.7	253.7	227.7
12875	392.9	392.7	389.1	373.5	347.5	317.0	285.0	254.9	228.5
13375	394.3	393.8	389.3	373.5	348.5	318.4	285.6	255.3	228.7
13875	392.9	392.7	389.1	373.5	347.5	317.0	285.0	254.9	228.5
14375	390.2	390.2	386.0	370.8	344.9	314.7	283.7	253.7	227.7
14875	389.2	388.9	384.7	369.7	343.7	313.7	283.2	253.1	227.3
15375	389.9	390.0	385.7	370.6	344.7	314.4	283.4	253.3	227.4
15875	392.4	392.3	388.6	373.0	346.9	316.6	284.3	254.2	227.8
16375	393.3	392.7	388.5	372.6	347.4	317.4	284.5	254.3	227.6
16875	391.5	391.2	387.7	372.1	345.9	315.5	283.4	253.4	227.0
17375	388.3	388.2	384.0	368.8	342.9	312.7	281.8	251.8	225.8
17875	387.0	386.7	382.3	367.3	341.5	311.4	281.0	250.7	224.9
18375	387.2	387.1	382.9	367.7	341.9	311.6	280.4	250.4	224.5
18875	389.0	388.9	385.1	369.5	343.5	313.1	280.8	250.8	224.3
19375	388.9	388.2	384.4	368.9	343.0	313.1	280.3	250.2	223.4
19875	385.8	385.8	382.0	366.6	340.7	310.1	278.2	248.2	221.8
20375	381.4	381.6	377.3	362.3	336.6	306.2	275.5	245.7	219.6
20875	378.6	378.6	374.2	359.4	333.9	303.7	273.5	243.2	217.4
21375	377.2	377.1	373.1	358.2	332.6	302.5	271.6	241.6	215.5
21875	376.3	376.5	372.9	357.7	332.0	301.9	269.9	240.0	213.4
22375	373.0	372.6	369.6	354.1	328.7	299.2	266.9	237.0	210.4
22875	365.9	365.8	362.2	347.5	322.4	292.9	261.7	232.1	205.9
23375	356.2	356.5	352.6	338.5	313.9	284.8	255.0	225.9	200.5
23875	346.2	346.7	342.8	329.2	305.4	276.9	247.8	218.7	194.0
24375	335.7	336.4	333.1	319.8	296.6	268.4	239.4	211.4	187.0
24875	322.9	323.9	320.9	307.7	285.5	258.4	229.5	202.5	178.5
25375	304.8	305.2	302.9	290.4	269.1	243.9	216.1	190.4	168.3
25875	279.3	279.7	276.4	264.9	246.3	223.3	198.3	175.0	154.7
26375	247.6	247.7	244.8	234.6	218.2	197.9	177.3	157.0	<b>140.0</b>



## 102 VÝROBNÍ HALA

### Místo zkrakového úkolu 1 - Udržovaná osvětlenost v kontrolních bodech

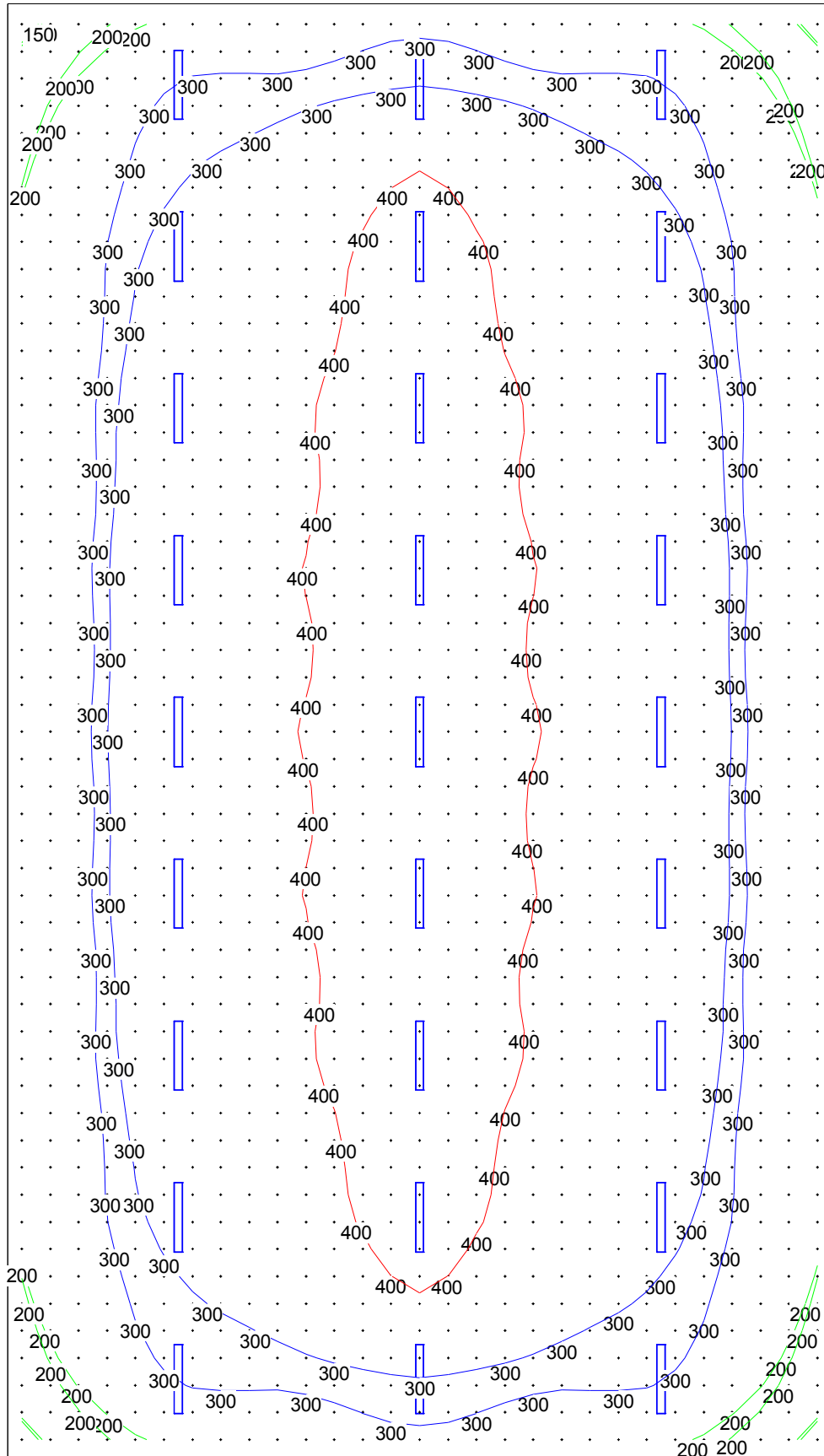
Emin: 139.7 Em: 311.0 Emax: 399.3 R=Emin/Emed: 0.45 Z: 0.73



## 102 VÝROBNÍ HALA

### Místo zrakového úkolu 1a - Udržovaná osvětlenost v kontrolních bodech

Emin: 140.0 Em: 338.6 Emax: 449.1 R=Emin/Emed: 0.41 Z: 0.73



## 102 VÝROBNÍ HALA

-

